

2023

PRESENTATION FOR RACKETS

 **Joma**pádel

The logo for FLEX, featuring the word "FLEX" in a stylized, lowercase font with a small registered trademark symbol.

High recovery open cell foams that enable maximum control and power when required.

The logo for FLEXSHIELD, featuring the word "FLEXSHIELD" in a bold, uppercase font, followed by a shield icon.

High quality fibres impregnated with the best resins on the market, ensuring our racket offers maximum durability and protection.

The logo for EXO COUNTER, featuring the word "EXO" in a bold, uppercase font above the word "COUNTER" in a smaller, uppercase font.

Frame made of 100% carbon with low density foam reinforced interior, giving greater reactivity in power shots and reducing the overall vibrations of the racket.



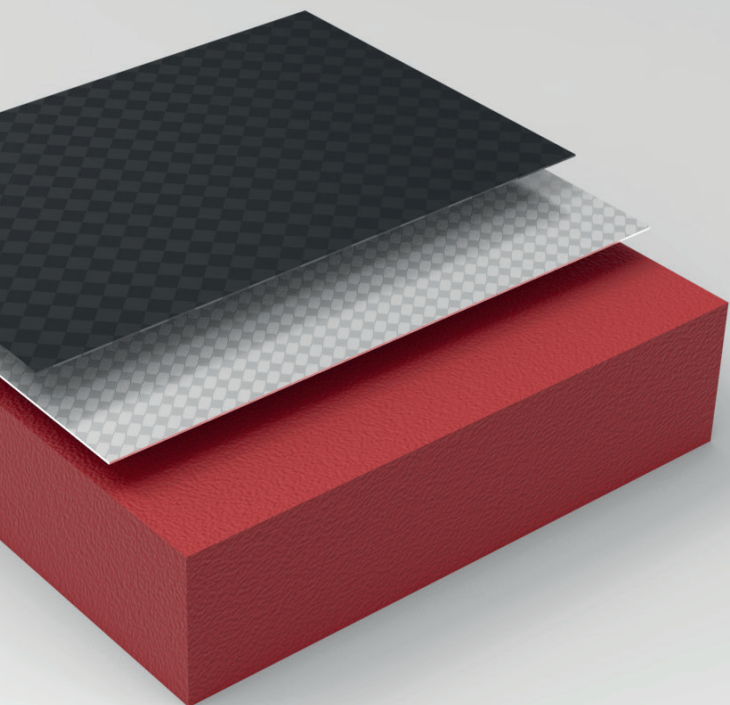
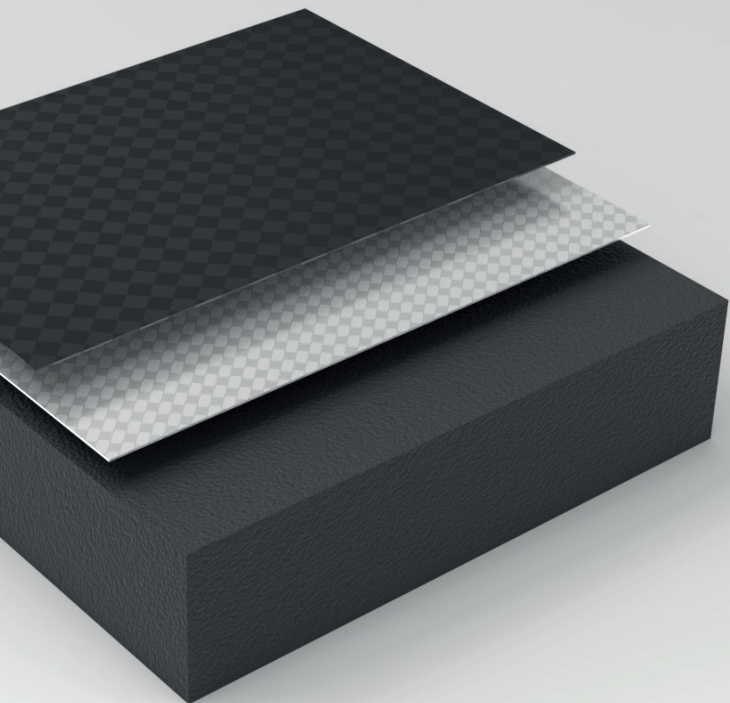
VIBRA-OUT

System of bridges at the core of the racket that dissipate residual vibrations at each stroke.



ROTATION

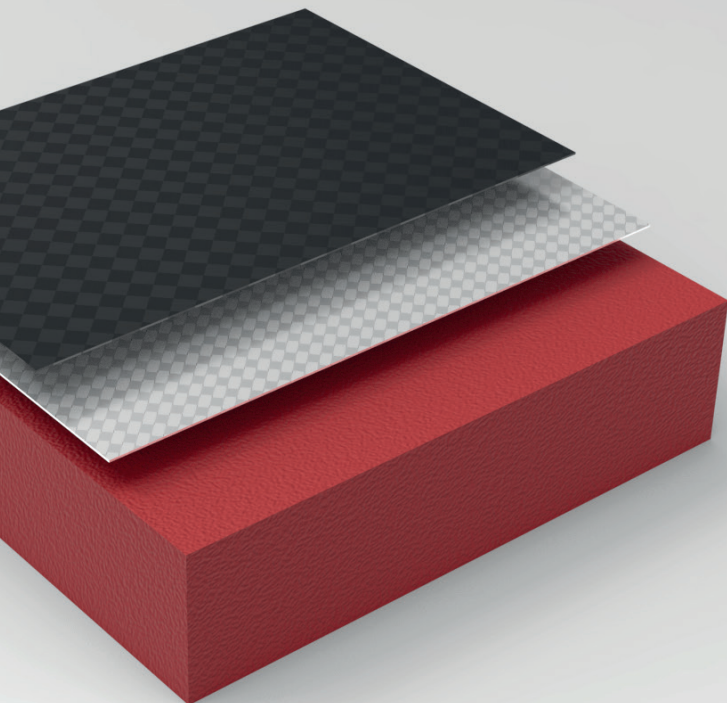
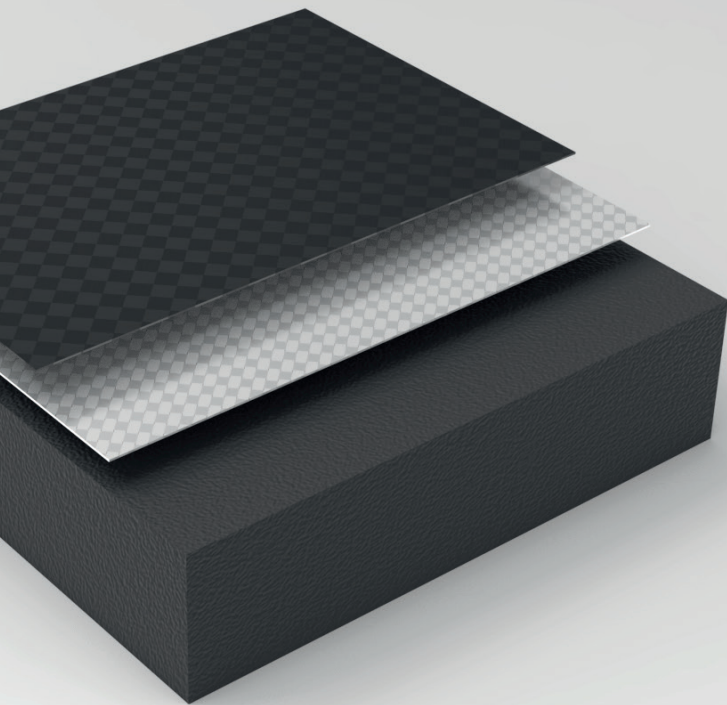
Relief technology in the racket planes increasing the effects on each stroke.



FLEXO

Our **BlackEVA FLEXO** has been developed at the Joma Padel innovation centre. Its composition provides high recovery and ball output in power strokes. Feel: Medium-Hard.

Our **RedEVA FLEXO** has been developed at the Joma Padel innovation centre. Its composition provides high recovery and ball output in power strokes. Feel: Medium-Hard.



FLEXSHIELD

The **FlexSHIELD 3K Carbon** fibre uses high-quality biaxially interlaced carbon yarns, achieving greater durability in the racket planes.

The **FlexSHIELD Graphite** fibre uses a carbon-derived compound that, combined with the fibreglass, increases racket flexibility.



EXO COUNTER

Frame made of 100% carbon with low density foam reinforced interior, giving greater reactivity in power shots and reducing the overall vibrations of the racket.

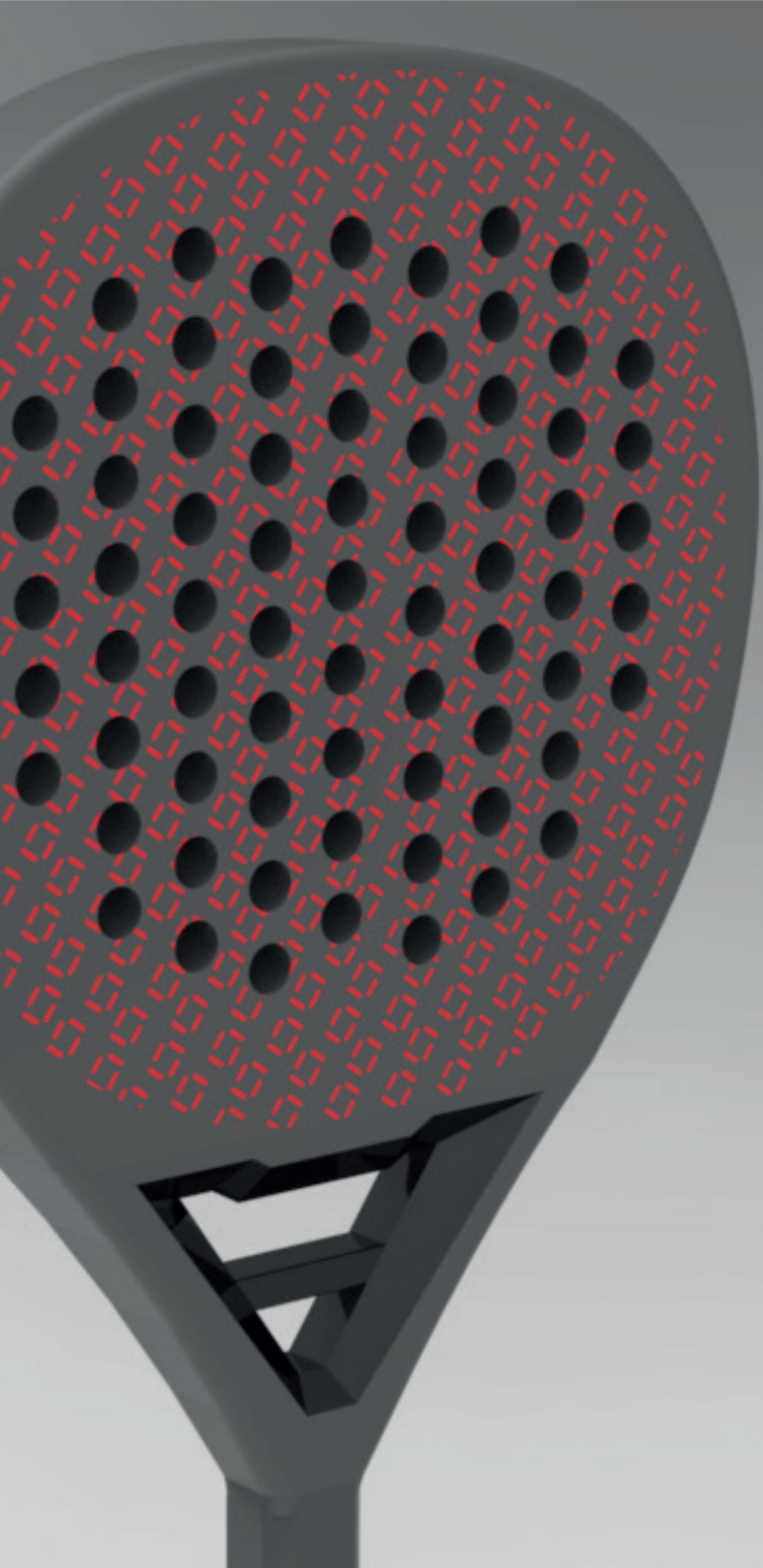


VIBRA-OUT

The **Slam**'s core consists of a bridge that vertically reduces vibrations and provides greater rigidity in the maximum power shocks by minimising torsion.

The **Tournament**'s core consists of a bridge that transversely reduces vibrations and provides greater stroke control.

The **Gold**'s core consists of two bridges that reduce vibrations and increase rigidity against high twist fatigue in the central area of the racket.



ROTATION

New relief system in the racket planes, thus achieving a greater effect on the ball. The pattern design is perfectly researched to ensure the correct balance between effect and control when striking the ball.

OUR LINES

FLEX LINE

The Flex Line range consists of the **Slam** and **Tournament** models, providing extra comfort with every stroke. This line has been designed for those looking for an easy-to-play racket without compromising on power and control when hitting the ball.

PRO LINE

The top range of our collection featuring our **Slam**, **Tournament** and **Gold** models. We have developed and dedicated this line to expert players who seek maximum performance and rigidity in their racket.

FLEX LINE



OCTOGONAL HANDLE

SLAM VIBRA-OUT BRIDGE



IRIDESCENT MATT DETAIL

SLAM

The **Slam Flex** racket is a diamond-shaped model, with maximum comfort and ball exit. It is designed both for players who are starting out in this sport, as well as for people with more experience who are looking for a comfortable and easy to use racket.

Its high-density BlackEVA FLEXO core combined with our Graphite FlexSHIELD fibres ensure greater sweet spot and ball exit at every point. It features the new 100% carbon EXO COUNTER frame to ensure durability and rigidity in the racket. Thanks to the VIBRA-OUT Slam system we have managed to reduce the vibrations produced when hitting the ball by 40%.

REF: 401186.154

LINE: MEDIUM

CORE : BLACK EVA

FACE: GRAPHITE FIBER

FRAME: 100% CARBON FIBER

SHAPE: DIAMOND

WEIGHT: 355-370G

THICKNESS: 38 MM

BALANCE: HIGH

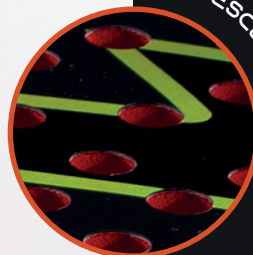
TECHNOLOGY

FLEX LINE



OCTOGONAL HANDLE

TOURNAMENT VIBRA-OUT BRIDGE



IRIDESCENT MATT DETAIL

TOURNAMENT

The **Tournament Flex** racket is a hybrid-shaped model, with maximum comfort and ball exit. It is designed both for players who are starting out in this sport, as well as for people with more experience who are looking for a comfortable and easy to use racket.

Its high-density BlackEVA FLEXO core combined with our Graphite FlexSHIELD fibres ensure greater sweet spot and ball exit at every point. It features the new 100% carbon EXO COUNTER frame to ensure durability and rigidity in the racket. Thanks to the VIBRA-OUT Tournament system we have managed to reduce the vibrations produced when hitting the ball by 40%.

REF: 401185.104

LINE: MEDIUM

CORE: RED EVA

FACE: GRAPHITE FIBER

FRAME: 100% CARBON FIBER

SHAPE: HYBRID

WEIGHT: 355-370G

THICKNESS: 38 MM

BALANCE: MEDIUM

TECHNOLOGY

PRO LINE



OCTOGONAL HANDLE

SLAM VIBRA-OUT BRIDGE



IRIDESCENT MATT DETAIL

SLAM

The **Slam Pro** racket is a diamond-shaped model, with high power and control. It is designed for experienced players who want to define the points and get the most out of their game.

Its BlackEVA high-density FLEX core combined with our FlexSHIELD 3K fibres guarantee the highest performance at every point. It features the new 100% carbon EXO COUNTER frame to ensure durability and rigidity in the racket. Thanks to the VIBRA-OUT Slam system we have managed to reduce the vibrations produced when hitting the ball by 40%.

REF: 401184.254

LINE: PROFESSIONAL

CORE: BLACK EVA

FACE: CARBON FIBER 3K

FRAME: 100% CARBON FIBER

SHAPE: DIAMOND

WEIGHT: 355-370G

THICKNESS: 38 MM

BALANCE: HIGH

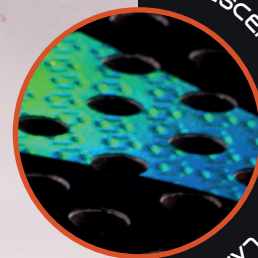
TECHNOLOGY

PRO LINE



OCTOGONAL HANDLE

TOURNAMENT VIBRA-OUT BRIDGE



IRIDESCENT 3D ROTATION PLANE

TOURNAMENT

The **Tournament Pro** racket is a hybrid-shaped model, with high power and control. It is designed for experienced players who want to define the points and get the most out of their game.

Its BlackEVA high-density FLEX core combined with our FlexSHIELD 3K fibres guarantee the highest performance at every point. It features the new 100% carbon EXO COUNTER frame to ensure durability and rigidity in the racket. Thanks to the VIBRA-OUT Tournament system we have managed to reduce the vibrations produced when hitting the ball by 40%.

REF: 401179.604

LINE: PROFESSIONAL

CORE: BLACK EVA

FACE: CARBON FIBER 3K

FRAME: 100% CARBON FIBER

SHAPE: HYBRID

WEIGHT: 355-370G

THICKNESS: 38 MM

BALANCE: MEDIUM

TECHNOLOGY

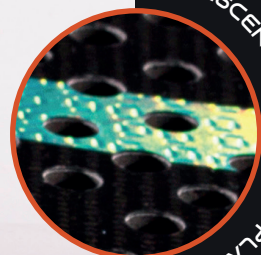
 **joma**pádel

PRO LINE



EXTRA LONG OCTOGONAL HANDLE

GOLD VIBRA-OUT BRIDGE



IRIDESCENT 3D ROTATION PLANE

GOLD

The **Gold Pro** racket is a diamond-shaped, high-powered model intended to generate more inertia in acceleration strokes thanks to its longer handle. It is designed for experienced players who want to define the points and get the most out of their game.

Its BlackEVA high-density FLEX core combined with our FlexSHIELD 3K fibres guarantee the highest performance at every point. It features the new 100% carbon EXO COUNTER frame to ensure durability and rigidity in the racket. Thanks to the VIBRA-OUT Gold system we have managed to reduce the vibrations produced when hitting the ball by 40%.

REF: 401180.116

LINE: PROFESSIONAL

CORE: BLACK EVA

FACE: CARBON FIBER 3K

FRAME: 100% CARBON FIBER

SHAPE: DIAMOND

WEIGHT: 355-370G

THICKNESS: 38 MM

BALANCE: HIGH

TECHNOLOGY

2023

 **Joma**pádel